



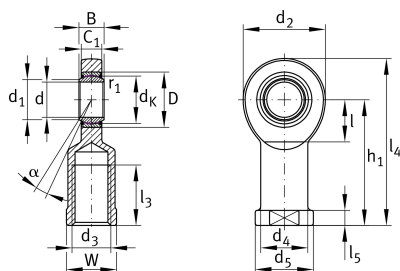
## GIR20-UK-2RS-A

### Rod end

Schaeffler ID:  
0066455770000

Rod end with internal thread, maintenance-free, sliding layer: ELGOGLIDE, DIN ISO 12240-4, dimension series E, type F, inner ring curved surface with hard chromium coating, sealed, right hand thread

### Technical information



### Main Dimensions & Performance Data

d	20 mm	Bore diameter bearing
D	35 mm	Outside diameter bearing
B	16 mm	Width inner ring
$C_r$	31,300 N	Basic dynamic load rating, radial
$C_{0r}$	75,600 N	Basic static load rating, radial
	360 g	Weight

### Dimensions

$d_K$	29 mm	Ball diameter
$d_1$	24.2 mm	Outer flange diameter inner ring
$d_2$	53 mm	Outer eye diameter
$d_3$	M20x1,5	Thread size
$d_4$	27.5 mm	Shank diameter
$h_1$	77 mm	Shank Length Internal thread head
$C_1$	13 mm	Width of the rod end
$\alpha$	9 °	Tilt angle
$l_3$	40 mm	Thread length Internal thread
$l_4$	103.5 mm	Total length internal thread head
$l_5$	10 mm	length rod end shank
$l_7$	27 mm	Distance drilling with/shaft start
$d_5$	35 mm	Shank diameter, large
W	32 mm	Width Across Flat
$G_r$	0 - 0,04 mm	Radial Clearance
$d_{OT}$	0 mm	Bore diameter bearing, upper tolerance
$d_{UT}$	-0.01 mm	Bore diameter bearing, lower tolerance
$B_{OT}$	0 mm	Width inner ring, upper tolerance
$B_{UT}$	-0.12 mm	Width inner ring, lower tolerance

**Mounting dimensions**

---

$r_{1smin}$	0.3 mm	Edge Spacing
-------------	--------	--------------

**Temperature range**

---

$T_{min}$	-30 °C	Operating temperature min.
-----------	--------	----------------------------

$T_{max}$	130 °C	Operating temperature max.
-----------	--------	----------------------------